

2025 JEJU

ANBD SPECIAL EXHIBITION

THE PATH OF WIND: CURRENTS AND CROSSROADS IN ASIA

2025. 5. 6 - 11

Seogwipo Arts Center, Jeju, Korea
Opening Ceremony _ 2025. 5. 9 (Fri) 16:00

ANBD Special Exhibition 2025, **JeJu**

ANBD SPECIAL EXHIBITION 2025, Jeju

May 06 - 11, 2025

Seogwipo Arts Center, Jeju, Korea

Cover Image Design _ Park, Woncheol

Editorial Design _ Lee, Donghyun

Printing _ Onground

Organization committee	Chair	Kim, Jeehyun
	Member	Chen, Guangdah Jeon, Jongchan Lee, Jieun Seo, Miyoung Siow, Yinyoong Wu, Tinghuan
Exhibition Committee	Chair	Jeon, Shinjong
	Member	Park, Woncheol Chang, Kyoungkook Kim, Suhan Lee, Donghyun
Judging Committee	Chair	Kim, Jeehyun
	Member	Lee, Jieun Siow, YinYoong Jeon, Shinjong Hakata, Tetsuya Kasai, Noriyuki Choi, Kyung Ran
ANBD Asia Office	Chair	Kim, Jeehyun
	General Secretary	Lee, Jieun
	Director	Jeon, Shinjong Rajapakse, Janaka Park, Woncheol
	Board Staff	Lee, Donghyun

ANBD Special Exhibition 2025, **JeJu**

May 6 - 11, 2025

Seogwipo Arts Center, Jeju, Korea

Where Winds Honor the Journey: Celebrating Asian Artistic Convergence



It is my sincere pleasure to welcome you to the 2025 ANBD Special Exhibition, "The Way of Wind: Asian Currents and Crossroads."

This exhibition brings together 121 artists and designers from across Asia, creating a space where diverse cultural expressions meet and artistic collaboration flourishes beyond the boundaries of nation, language, and medium. It is a proud reflection of ANBD's core philosophy.

Since its establishment in 2008, ANBD—Asia Network Beyond Design—has grown into a dynamic platform that transcends traditional artistic categories. We are committed to connecting the identities, values, and evolving narratives of Asia through creative exchange. With more than 80 international exhibitions held to date, ANBD continues to nurture dialogue and mutual understanding among artists across the globe.

Today, we live in an era that demands deeper cultural empathy and cooperation. In this context, Asia holds a special place—not only as a geographic region, but as a cultural force with centuries of tradition and renewed contemporary energy. The multiplicity of Asia's voices offers fresh potential for shaping new forms of expression that can engage with the world meaningfully.

It is fitting that this exhibition takes place on Jeju Island—a land shaped and sustained by wind. In Jeju, wind is more than a natural element: it is a metaphor for resilience, circulation, and transformation. In that spirit, this exhibition traces the "way of wind" as a symbol of movement, encounter, and artistic connection across cultures.

At the heart of our efforts is the value of borderlessness—the idea that art must cross borders, genres, and generations to build new relationships and create inclusive narratives. By dismantling boundaries, we open space for mutual respect and deeper understanding.

I would like to express my deepest appreciation to our ANBD country representatives and board members for their dedication to this shared vision.

Finally, I extend my heartfelt gratitude to all the participating artists whose creative passion and generous contributions have given life to this exhibition.

Thank you once again for joining us. May this exhibition be a meaningful journey—one that inspires connection, reflection, and a renewed sense of cultural possibility.

A stylized, handwritten signature in black ink, appearing to read 'Jeehyun Kim'.

Jeehyun Kim
Chairperson, ANBD
Professor, Hansung University, Korea

ANBD, Jeju Special Exhibition Participants

Aroonsrimorakot, Supara	Jeong, Jayoung	Lin, Yu-Sheng
Cha, Sujoung	Jung, Sukyoung	Lo, WeiHao
Chamyen, Nuttakom	Kacharoen, Nikorn	Lu, shih-yun
Chang, Heemok**	Kalumpahaiti, Kanpat	Maruyama, Matsuhiko
Chang, Kyoungkook	Kaneko, Teruyuki	Min, Jihye
Chang, Yongsuk	Kang, Hyundae	Monphrom, Raphipha
Chanyou, Naphat	Karnchanapayap, Gomesh	Moon, Jimin
Cheang, Karen Poh Kim	Kasai, Noriyuki	Nakajima, Chie
Chen, Guang-Dah	Kato, Genya	OuYong, Yuet Foong
Chen, HanLing	Ke, Ronghua	Park, Hyeji
Chen, HsiangLing	Khiaomang, Kriangsak	Park, Woncheol
Chen, YanBo	Kim, Hansol	Payungphan, Khan
Chen, Hsiao-Feng / Ruoying Sima	Kim, Heegyun	Phueaknamphol, Kanlayanee
Chia, Nicsson	Kim, Jeehyun	Phungkate, Phuwarichsitta
Choo, ChoiSan	Kim, Jinkyung	Pinnukul, Patamas
Choong, Rubiana Kean Sin	Kim, Suhan	Poolkerd, Pichanun
Chung, Hyeuk	Kunphunsup, Papattaranan	Ryu, Jaeyoung
Chung, Nayoung	Kunthonsap, Kanyaporn	Sakda, Pornpimon
Chung, SuiLan	Kuo, Yu-Ling	Sangiam, Panuwat
Fan, Hsiwen	Lee, ChiaChieh	Sankaburanurak, Atiyot
Ha, Jiyon	Lee, Donghyun	Seo, Dongjin
Ha, Sooknyung	Lee, Eunkyong	Seo, Miyoung
Han, Ahyoung*	Lee, Heangwoo	Shim, InSup
HANAWA, Daisuke	Lee, Jieun	Shin, Yoonjin
Hayashi, Mitsuo	Lee, Jiin	Slow, YinYoong
Heo, Jeongmin	Lee, Jungjin	Sirisan, Prattana
Hou, HsiaoWen	Lee, Sangwon	Song, Youngsub
Hsieh, MinChai	Lee, Sungkyu	Suh, Seungyeon*
Hsu, PiChuan	Lee, Youngju	Suntrayuth, Rasa
Hu, Chen-Chung	Lewangamage, Nipuni	Suwannipa, Pakamas
Huang, ChienFang	Asamani	Suwan-on, Chaiwat
Ishii, Toshio	Liew, TC Ting Chuang	Tajima, Miyuki
Jang, Jaeick	Lin, HsuanChe	Tak, YoungHwan
Jeon, Shinjong	Lin, ShunChing	Takahashi, Nobumasa

Tang, Jung-Hsiao
Teh, Chun Boey
Thanavanichagul, Chumnong
Thongdee, Palthoon
Tsai, Cheng-Min
Tsai, Yi-Ting
Um, Sohee
W. Rangstsawat, Fonthip
Wang, Lan-Ting
Wu, Ting-Huan
Yang, Leen
Yap, Ai-Ling
Yeh, Yu-En
Yeom, Hyesoo
Yoo, Dongkwan
Yoo, Sangjun
Yoon, Sukhwan
Yu, Chia-Yan
Yu, Tzu-Yung

* This research was supported by a 2025 Research Grant from Sangmyung University

** This work was supported by 2025 Research Fund of Myongji University

2025 ANBD Examination Review



Kim, Jeehyun

This year's ANBD Special Exhibition featured a wide range of high-quality artworks that highlighted each region's cultural identity and creative sensibility. Particularly impressive were the efforts to harmoniously blend digital media with traditional techniques. Judging was based on interpretation of the theme, visual and structural completeness, and originality. The diverse approaches and passion of the participants were clearly evident throughout. I hope this exhibition serves as a meaningful opportunity for growth for the participants and offers visitors a glimpse into the richness and potential of Asian design.

Professor, Hansung University / jeehyun0208@hanmail.net



Hakata, Tetsuya

It is a great honor for me to serve as a juror for the ANBD2025 Jeju Special Exhibition. This exhibition, under the theme "The Path of Wind: Currents and Crossroads in Asia," sought to share a vision for Asia, starting from Jeju Island, Korea. Among the selected works, I felt that the question of how a new future can be forged—built upon the layers of tradition accumulated over many years and through the intersection of diverse cultures and values—was skillfully expressed with a delicate balance of structure and impression. Congratulations to all the award recipients.

Assistant Professor, Tamagawa University / hakata@art.tamagawa.ac.jp



Siow, YinYoong

Beautiful Jeju Island, with its radiant sunshine and spontaneous rain, is truly enchanting. The grand Seogwipo art center, nestled among rolling mountain landscapes, provided a stunning backdrop for the successful 2025 ANBD Special Exhibition. Each solo exhibition stood out with its unique strengths and research focus, while the group exhibition showcased a vibrant array of works - rich in diversity and exceptional in execution. The visual impact was overwhelming, making it a challenge to absorb everything at once and adding depth to the evaluation process. I'm grateful to be here, to take part in it all and witness this extraordinary event firsthand.

KL Art Group / siowyinyoong@gmail.com



Lee, Jieun

The ANBD Jeju Special Exhibition was held successfully at the beautiful Seogwipo Arts Center, nestled in the stunning natural landscape of Jeju Island. Artists from across Asia presented a wide array of works that reflected their cultural and regional identities through diverse media and expressive styles. Judging focused on creativity, clarity in expressing the subject matter, and visual and aesthetic excellence. Among the many outstanding pieces, the Grand Prix-winning work stood out for its powerful yet indirect portrayal of Jeju through the imagery of wind-swept seas. The exhibition as a whole demonstrated a thoughtful fusion of traditional techniques and digital media, offering a compelling glimpse into the evolving language of Asian design. The individuality and passion of each artist were vividly conveyed, making this a meaningful and inspiring experience for audiences from around the world.

Professor, Hokkaido University of Education / jeentwo@gmail.com



Jeon, Shinjong

The 2025 Jeju ANBD Special Exhibition, held under the theme "Paths of Wind: Currents and Crossroads of Asia", successfully created a platform where the identities, historical memories, and contemporary sensibilities of various Asian countries intersected through artistic language. Despite differing regional and cultural backgrounds, the exhibited works were cohesively linked through the overarching concepts of "flow" and "intersection," enabling multilayered interpretations between tradition and modernity, materiality and conceptuality, identity and transnationalism. Notably, many works offered visual and conceptual representations of Asian spatiotemporal sensibilities, while the diversity of media and experimental approaches deepened the exhibition's aesthetic and intellectual impact. Moving beyond the notion of a geographical Asia, the exhibition explored the pluralism and transformative potential of cultural, historical, and psychological Asia. In doing so, it served as a high-level artistic platform and made a meaningful contribution to ANBD's vision of advancing East Asian design exchange.

Professor, Hansung University / art-chun@hanmail.net



Kasai, Noriyuki

Many of the works were created by artists interpreting the theme of the Jeju Special Exhibition, "The Path of Wind: Currents and Crossroads in Asia," resulting in a very diverse range of works. There were many impressive works that focused on "wind" and those that expressed the image of "Jeju," but the range of expression was very wide, and I felt that the presence of many works, including drawings, typography, and CG, was a distinctive feature of the ANBD exhibition. The Grand Prix winner's bird's-eye view was innovative, and the part showing the strong swaying of the sea by the wind was an excellent work that expressed Jeju even though it did not directly express it. The other winning works were selected from among the diverse expressions such as typography and abstraction, but they were works that successfully absorbed and interpreted the theme, which once again showed the diversity of the ANBD exhibition.

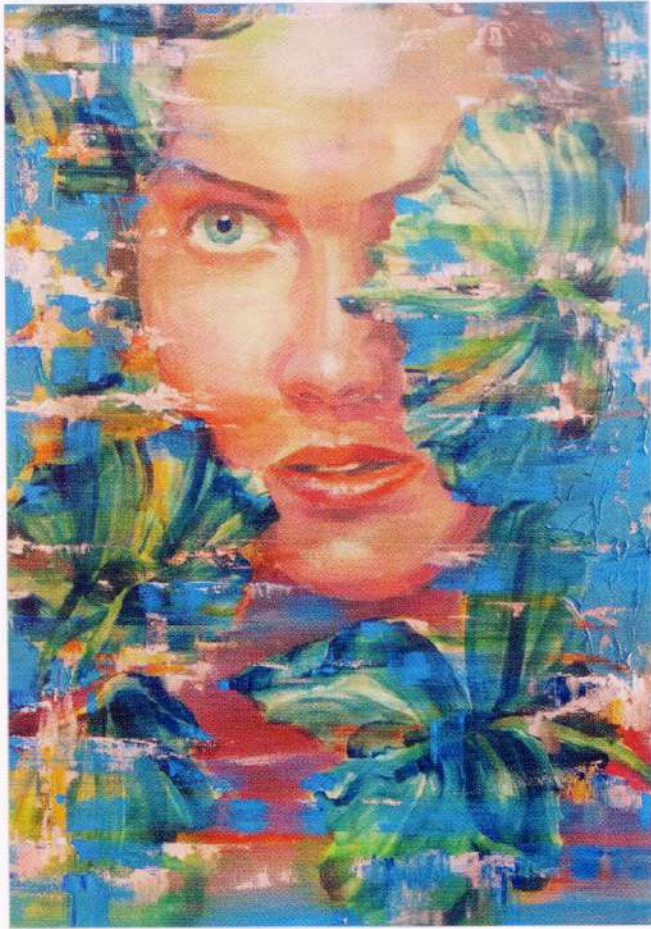
Professor, Nihon University / kasai@gdc.name



Choi, Kyung Ran

The Path of Wind presented works by artists who interpreted the theme through their diverse cultural sensibilities, using visual design as a medium for expressing cultural identity. The exhibition went beyond mere cultural exchange, offering meaningful insights and inspiration for the future of design in both emotional and aesthetic dimensions. Within the digital media context, the exhibition effectively demonstrated how intangible thoughts and internal narratives can be translated into visual form. Artists utilized various digital and spatial media to express their personal cultural journeys, highlighting the potential of design to communicate the unseen. Notably, the unique visual cultures and design languages of the Asian region added emotional depth and aesthetic richness. These contributions provided critical perspectives on the role of Asian aesthetics and culturally grounded identities within the broader global design discourse.

Professor, Kookmin University / ran@kookmin.ac.kr



Sangiam, Panuwat

Phuket Rajabhat University
panuwat@pkru.ac.th

lady in Blue 2



**Sankaburanurak,
Atiyot**

Srinakharinwirot University
artsun2518@gmail.com

Collision of prosperity

