

20
25

SEOUL

ASIA
NETWORK
BEYOND
DESIGN

Mokpo National University Museum
October 23(Thu) - 30(Thu)

ASIA NETWORK BEYOND DESIGN 2025, **Seoul**



It is a true pleasure to welcome you to the 2025 ANBD Exhibition.

Since its beginning in 2008, ANBD has continuously expanded its participating regions and grown into an international platform where artists and designers from across Asia come together to create and exchange ideas. Through this, ANBD fosters cultural and creative collaboration, building bridges toward our shared future.

The theme of this year's exhibition, "Seeing, Feeling and Living in Asia," invites us to reflect on how we experience and embody Asia in our daily lives and creative practices. It calls on us not only to look at the object of observation, but to feel its depth, live its spirit, and express its identity through art and design.

We know the power of networks that break down boundaries—centered in Asia, reaching beyond. Through creating new connections. Through different interpretations of the same theme, we rediscover our shared identity, and through respect and collaboration, we create new networks together.

May this exhibition be a meaningful encounter of timeless expression and inspired practice. I sincerely hope that it will serve as a turning point for expanding the diversity and creativity of Asian art toward a broader network.

I would like to express my deep gratitude to all ANBD members and the representatives of each region for their dedication and contribution.

Thank you.

Jeehyun, Kim

A handwritten signature in black ink, appearing to read 'Jeehyun Kim'.

Chairman of ANBD



It is my great pleasure to welcome you to the Asia Network Beyond Design 2025 exhibition, held this fall at Mokpo National University in the beautiful port city of Mokpo, Korea.

ANBD has long stood at the intersection of tradition and innovation, connecting regions across Asia and beyond through the power of art and design. As we host this meaningful event at Mokpo for the first time, we are honored to join this dynamic network that celebrates creativity without boundaries.

Located in the southwestern part of Korea, Mokpo is a city of cultural heritage and maritime history, where the mountains meet the sea. Its unique landscape, shaped by generations of local artistry and resilience, provides a fitting backdrop for this year's theme: "Seeing, Feeling and Living in Asia." We believe this theme resonates deeply with Mokpo's spirit — a city that embraces change while honoring its roots.

On behalf of Mokpo National University, I extend my deepest gratitude to the Asia Network Beyond Design, the participating artists and curators, and our supporters. Your collective efforts have made it possible to present such a vibrant celebration of contemporary design and expression.

May this exhibition be a memorable experience for all, and may it continue to expand the horizon of design without boundaries.

Hacheol SONG, Ph.D.

A handwritten signature in black ink, written in Korean calligraphy. The characters are '송하철' (Song Hacheol).

President, Mokpo National University



I extend my heartfelt congratulations to all the designers and artists participating in the 2021 exhibitions, which will take place across four major Asian cities - Tokyo, Kuala Lumpur, Mokpo, and Seoul. It is also a distinct honor and pleasure to offer my warmest greetings on the occasion of the exhibition at Mokpo National University, situated in the culturally rich and historically significant city of Mokpo, known as Korea's City of Arts.

Asia, as a continent shaped by millennia of cultural, philosophical, and social diversity, offers a vast reservoir of creative inspiration. This exhibition - Seeing, Feeling and Living in Asia - invites us to engage with Asia not only as a geographical space, but as a dynamic lived experience, seen through the diverse expressions of gifted artists from across the region.

Far beyond a visual presentation, this exhibition represents a collective journey of introspection and an exploration of identity, memory, and the emotional landscapes that define both individuals and communities throughout Asia. Each artwork serves as a lens into the artist's unique worldview, anchored in personal narratives and cultural heritage, yet resonating with shared sensibilities. Together, these works transcend linguistic and national boundaries, connecting us through the universal language of art.

I wish to express my sincere appreciation to Prof. Jaehong Park of Mokpo National University for his dedication in organizing this meaningful event. To all participating artists, I offer my deepest gratitude for your creativity and commitment. May this exhibition serve as a significant platform for cultural dialogue, mutual understanding, and enduring artistic exchange.

Jongchan JEON, Ph.D.

A handwritten signature in black ink that reads "Jongchan JEON". The signature is stylized and cursive.

Representative of ANBD School of Art
Dean, Graduate School of Art

**ANBD, Tokyo
Participants**

An, Kanghyun	Hakata, Tetsuya	Kang, Hyundae
Bae, Jinseok	Han, Ahyoung****	Kannok, Jirawat
Bang, Kyungrhan	Han, Hyekeyeong	Kanrattanasutra, Pasutt
Bu, Yan	Han, Ming	Karnchanapayap, Gomesh
Cha, Sujoung	Han, Sangman	Kasai, Noriyuki
Chamyen, Nuttakom	Han, Wangmo	Kato, Genya
Chang, Heemok	Hanawa, Daisuke	Keawnapan, Boonliang
Chang, Kyoungkook**	Harh, Seungwan*	Khiaomang, Kriangsak
Chang, YuWei	Hashimoto, Tomoko	Kim, Cheehoon
Changpum, Chutima	Hayashi, Mitsuo	Kim, Haesol
Chen, ChingHung	Hiranchotepaisan, Kachornpon	Kim, Heegyun
Chen, ChingYi	Hong, Yeobjung	Kim, Hyeonjeong
Chen, GuangDah	Hong, Youngran	Kim, Inok
Chen, HanLing	Hosokawa, Yume	Kim, Jinkyung
Chen, HsiangLing	Hsieh, MinChai	Kim, Mikyung
Chen, HsiaoFeng	Hsu, LunChen	Kim, Sooyeon
Chen, YanBo	Hsu, PiChuan	Kim, Soyoung
Cheng, ChienHua	Hu, ChenChung	Kim, Suhan
Chia, Nicsson	Huang, ChienFang	Kim, Sunhwa
Chien, LiangYing	Huang, MinHua	Kim, Wonjae
Chin, KonYit / Siow, Yinyoong	Huang, WenTsong	Kiyama, Tomomi
Chiu, Nail	Hwang, Heejoo	Kojima, Hina
Cho, Baemoon	Hwang, Junho	Kunphunsup, Papattaranan
Cho, Haemin	Illanperuma, Gayathri	Kunthonsap, Kanyaporn
Choi, Hyejin	Im, Minjung	Kuo, KuanSheng
Choi, Jinhee	Inkutanon, Mongkol	Kuo, YuLing
Chono, Ayane / Kawamoto, Suzuka / Miyazaki, Rika / Birukawa, Momoka	Inkuer, Akapong	Kwon, Sungha
Choo, Choisan	Insamian, Raluek	Lai, HuiJu
Choo, Kyungim	Ishii, Toshiwo	Lai, YiChen
Chu, I Tien	Jairak, Korakot	Lai, YuehHsing
Chuang, KuoMin	Jeon, Jongchan	Lee, ChiaChieh
Chung, Byunghun	Jeon, Seunghyouk	Lee, Chin
Chung, ChiaoHsuan	Jeon, Shinjong	Lee, Eunkyong
Chung, Hyeuk	Jeong, Jayoung	Lee, Heangwoo
Chung, KaiHan	Jeong, Jihong	Lee, Hyoyoung
Chung, Min	Jeong, Yoojeong	Lee, Jain
Chung, Nayoung	Jiang, Jialin / Wang, Xiaona	Lee, Jieun
Chung, SuiLan	Jue, WuHaw	Lee, Jlin
Ebine, Sota	Jung, Hehsoon	Lee, Jinwoo
Fan, HsiWen	Jung, Sooyeon	Lee, Junga
Fan, JuWan	Jung, Sukyoung	Lee, Jungjin
Gavyota, Manat	Jung, Yurim	Lee, Kyunglim
Gibert, Chameli	Juysukha, Supawadee	Lee, Myunghee
Ha, Seungyong***	Kacharoen, Nikorn	Lee, Nahyun
Ha, Sooknyung	Kalip, Panuwad	Lee, Sangwon
	Kaneko, Teruyuki	Lee, Suyoung

* This research was financially supported by Hansung University.

**This work was supported by the Myongji University research grant in 2025.

***This work was supported by the PaiChai University research grant in 2025.

****This research was supported by a 2025 Research Grant from Sangmyung University

Lee, Wonbeom	Phensit, Thassanai	Tawalwongsri, Sun
Lee, Youngju	Phriwanrat, khanin	Tchah, Eunsoo
Lee, Youngmi	Phueaknamphol, Kanlayanee	Teangtrong, Pramot
Lewangamage, Nipuni Asamani	Phungkate, Phuwarichsitta	Teh, Chunboey
Li, ChangHu	Pinnukul, Patamas	Thanavanichagul, Chumnong
Li, ChingYi	Polsri, Nuthasak	Thongdee, Paithoon
Lim, Ahjae	Poolkerd, Pichanun	Tomita, Kou
Lin, FangNien	Pungpom, Phakpoom	Tsai, Chengl
Lin, GuangYu	Qiao, Dan	Tsai, ChengMin
Lin, HsuanChe	Ra, Jeeyoung	Tsuchiya, Ibuki
Lin, YuJin	Rajapakse, Janaka	Tsuchiya, Koki
Lin, YuSheng	Rangsitsawat, Fonthip W.	Um, Danbi
Lin, YuTing	Ryu, Jaeyoung	Um, Sohee
Lo, KuangChih	Sadsunk, Suwit	Varanuyuth, Bundit
Lo, WeiHao	Saito, Naomasa	Wang, LanTing
Lu, ShihYun	Sakda, Pornpimon	Wang, MingFeng
Mahawalag, Mathisha	Sakuraba, Tomoya	Wang, PuYun
Mahawalage, Athula	Sangiam, Panuwat	Wang, ShengWen
Maruyama, Matsuhiko	Sangwalpetch, Noppadon	Wang, WenChing
Mayusoh, Chanoknart	Sanjeeewa, Sagara	Woo, Hyunri
Min, Jihye	Sankaburanurak, Atiyot	Xian, Xiaoqing
Min, Kyungmin	Sano, Tohru	Yamamoto, Maki
Miyahara, Koshi	Seo, Dongjin	Yamasaki, Sakura / Yoshikawa, Ryogo /
Mizuma, Keiko	Seo, Miyoung	Irikata, Hiroto / Tatsuzawa, Mai
Mo, Hyunsook	Seol, Jihyoung	Yang, Kaichao / Wang, Xiaona
Mo, Jieying / Wang, Yawen / Lim, XinYe	Sermisri, Nichanant	Yang, Leen
Monphrom, Raphiphat	Shen, Yu / Wang, Xinyue	Yang, YaJun
Moon, Jungmook****	Shim, Bokseob	Yap, Ailing
Na, Yuri	Shim, InSup	Yeh, YuEn
Nakajima, Chie	Shimoguchi, Miho	Yeom, Hyesoo
Naksena, Noppasak	Shin, Janghee	Yi, Wonje****
Nimanussornkul, Thamrongsak	Shin, Yoonjhin	Yoo, Dongkwan
Oh, Cheolhoon	Son, Heejoo	Yoo, Hyunah
Oh, Youngjae	Song, Gyaeyoung	Yoon, Yeojong
Ohashi, Ayaka	Song, Jihoo	Yoonoo, Sujitra
Okubo, Kona / Ikura, Sena /	Srisarankullawong, Nawaporn	Yu, ChiaYan
Takeda, Fuwa / Fukasawa, Ayana	Su, Kai	Yu, Seonggeun
Omine, Mei	Sudthongkhong, Chudanat	Yu, TzuYung
Ouyong, Yuetfoong	Suh, Seungyeon	Yuttharot, Apisara
Park, Heewoon	Sungkangwan, Thosaporn	Zhang, Xinyang
Park, Hyeji	Sungwan, Chaveeporn	Zhao, Hengchen
Park, Jaehong	Suntrayuth, Rasa	
Park, Sohyoung	Suwan-on, Chaiwat	
Park, Woncheol	Tajima, Miyuki	
Payungphan, Khan	Tak, YoungHwan	
Pham, NhuQuynh	Takahashi, Nobumasa	



Sadsunk, Suwit

Suan Sunandha Rajabhat University
Suwit.sa@ssru.ac.th

THE ABUNDANCE OF SIAM



Saito, Naomasa

AGASJ (Association for Glass Art Studies, Japan)
saitonaomasa@gmail.com

Seeing in PROVENCE



Sakda, Pornpimon

Rajamangala University of Technology Rattanakosin
pornpimol.sak@rmutr.ac.th

Patterns of Chet Riw Identity No.3



Sakuraba, Tomoya

Hokkaido University of Education
d14353q1@stu.hokkyodai.ac.jp

Tyutengi-Ceremony of the Center



Sangiam, Panuwat

Phuket Rajabhat University
panuwat@pkru.ac.th

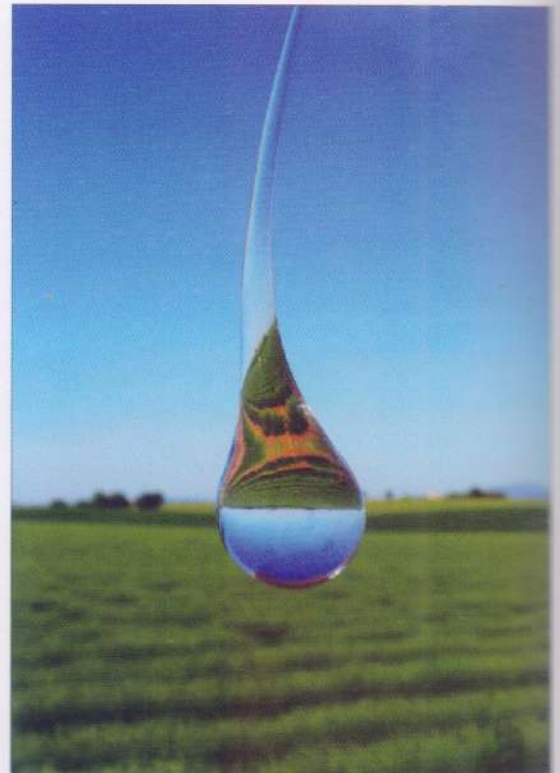
In Emotion 2

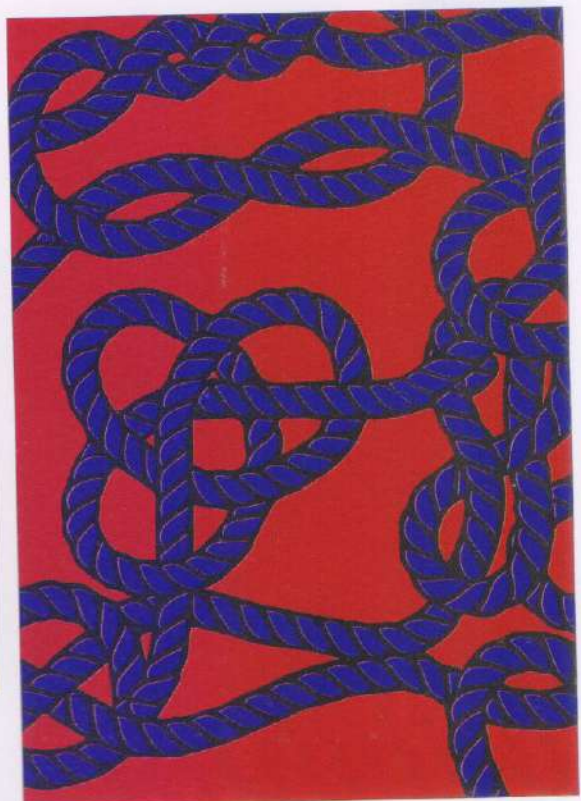
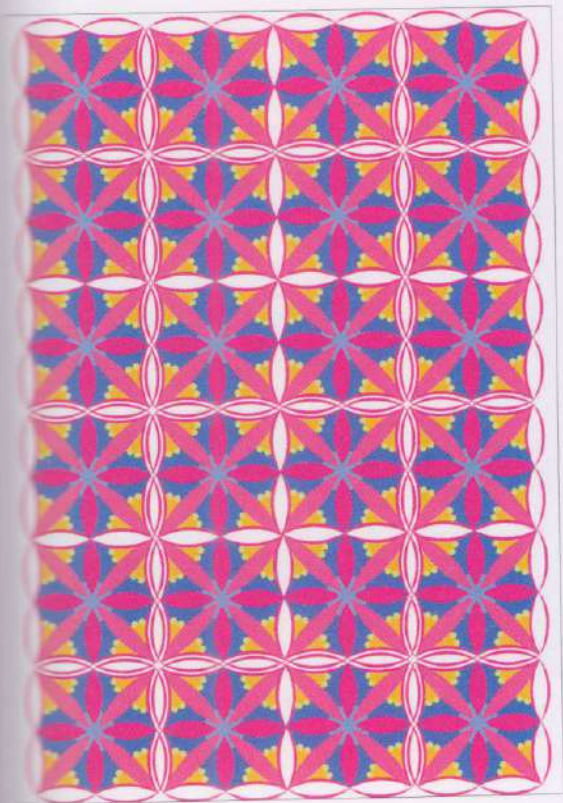


Sangwalpetch, Noppadon

Suan Sunandha Rajabhat University
noppadon.sa@ssru.ac.th

Knots or Not #1







Athula Mahawalage

It is a distinguished honor to serve as a member of the jury for the ANBD-2025 Excellent Awards. I was overjoyed to see many great Asian artists creatively focused on the theme "Seeing, Feeling, and Living in Asia" through their creative works. These selected artists are working hard to come up with ways to make their styles more diverse. The creations with vibrant hues and the slow-moving, experimental dynamic content were all relaxing ways to explore the theme of the presentation. Congratulations to all the outstanding creators who won awards.

AM Kreations Pte Ltd mahawalage.amk@gmail.com



Thaonthong, Suchat

The Asia Network Beyond Design (ANBD) has continued its progressive development, demonstrating a steadfast commitment to promoting excellence in art and design across Southeast Asia, South Asia, and beyond. This advancement is reflected in both the tangible outcomes of creative practice and the intangible values of aesthetics, meaning, and cultural identity. In recent years, ANBD has evolved beyond conventional design, embracing fine art and fashion as integral to its vision. The works presented are not mere reflections of Asian traditions but are reimagined through contemporary lenses—articulating the spirit of the present, the aspirations of tomorrow, and the imagination of the future. The ANBD 2025 annual exhibition stands as a testament to this transformation. It affirms the network's role as a platform for interdisciplinary and cross-cultural exchange, where design engages with critical narratives and aesthetic innovation. ANBD continues to redefine the global design discourse through diverse, meaningful, and future-oriented artistic expressions rooted in.

Emeritus Professor, Bangkok Thonburi University / thaonthongs.9@gmail.com



Hakata, Tetsuya

私たちは多面的な視点を持つことを願いつつ、身体は一つの地点にしか置くことができません。しかし、ビジュアル表現を通して、私たちは空間や時間を多層的に見つめ直し、類推していくことで他の事象との関連や展開の可能性を発見することができます。今年のANBDでは、個人の視点をアジアの風景として展開させ、異なる地域をつないでいくために必要な解釈の可能性を見出していく作品が多く見受けられました。

Although we can only be in one place at a time, visual expression allows us to rethink space and time, and discover new connections. At this year's ANBD, many works reimagined personal views as part of the Asian landscape, suggesting ways to link diverse regions.

Assistant Professor, Tamagawa University / hakata@art.tamagawa.ac.jp



Ha, Sooknyung

In essence, I highly appreciated works centered on Asia's multifaceted identity and its expansion, such as connecting Asia's past, present, and future with nature, evoking deep reflection on the integration of ecological sustainability and cultural identity beyond just visual representation. I was particularly impressed by the creative efforts that were rooted in tradition but looked beyond.

Professor, Sangmyung University
snha3430@nate.com



Huang chhien fang

It is an honor to serve as a judge for the 2025 ANBD Jeju Special Exhibition Excellence Award. It's great to see so many great creators with so many imaginative works, it's really amazing. The artists have invested a lot of time and creativity to create their own unique skills, which is really admirable. Each piece offers a thought-provoking interpretation of the theme. Kudos to all the talented winners!

Professor, Tainan University of Technology
tf0173@mail.com.edu.tw

