



Asia Network
Beyond Design
2022 SEOUL
Journey

Dream
Forest Gallery
Seoul,
Korea

December 1-7, 2022
10:00 a.m - 18:00 p.m

Asia Network Beyond Design group is aiming to promote many valuable exchanges and to perform Asian identity through networking over various boundaries.

Asia :There are regional offices in four areas(Seoul,Tokyo,Tianjin,Taipei,Tainan, Kuala Lumpur, Shanghai, Bangkok, Comlombo, Shanxi) in Asia for the base of various activities.

Network :ANBD increases the members through the introduction of ANBD participants.

Beyond :The purpose of ANBD is to deal with the various areas beyond boundaries such as creation activities, generations, countries, event styles, professionals & amateurs, educational / industrial activities, organizations and etc.

Design : "Design" in the name of the group indicates a lexical meaning of design as well as more various and broader activities which are general art & design activities and tangible & intangible system.

ANBD Website
<http://anbd.info>

ANBD Seoul website
<http://anbdseoul.com>

ASIA NETWORK BEYOND DESIGN 2022. **Seoul**

December 1-7, 2022
Dream Forest Gallery

Editorial design director _ Sunhwa KIM
Cover Image Design _ Jaehong PARK
Cover Layout Design _ Eunkyong OH
Editorial Design _ Sunhwa KIM
Printing _ CANA C&P

President of ANBD _ Youl CHO
Representative of ANBD, Seoul _ Jongchan JEON
Representative of ANBD, Tianjin _ Shufeng SONG
Representative of ANBD, Tainan _ Tinghuan WU
Representative of ANBD, Tokyo _ Akiyo KOBAYASHI
Representative of ANBD, Taipei _ Guangdah CHEN
Representative of ANBD, Kuala Lumpur _ YinYoong SLOW
Representative of ANBD, Bangkok _ Miyoung SEO
Representative of ANBD, Yuncheng _ Jinzheng ZHANG
Representative of ANBD, Colombo _ Mahawalage ATHULA
Representative of ANBD, Sanghai _ Jihong YU



I heartily congratulate on the 2022 ANBD Seoul exhibition. I convince that ANBD is making a great contribution to the development of Asian art through a network of Asian artists formed beyond design.

I heard that the common theme of this year's ANBD regular exhibition is 'Journey'. Journey is not simply a process of travel, but it is a process of life, furthermore, it can be said that it is a flow of time that projects the past, present, and future of all phenomena and existence in the world. Through this journey, we strive to understand each other and make the world a better place. I think that Asian artists and designers creating works with these themes show the spirit of the times that project Asia's past, present, and future.

As an entrepreneur running various brands of the K-beauty that leads the world beauty industry, I would like to pay my respects to Professor Jeon, Jongchan of ANBD Korea for his devotion to ANBD's creative activities as a creative work organizer. At the same time, I look forward to contributing to the development of art and design in Asia through collaboration between Yakson and ANBD.

Once again, I congratulate on the 2022 ANBD Seoul Exhibition, and I wish ANBD's endless development.

Byung Chul, LEE

A handwritten signature in black ink, appearing to be 'Byung Chul, LEE' in a stylized, cursive script.

Chairman, Yakson Beauty



I heartily congratulate on the 2022 ANBD Seoul exhibition. I convince that ANBD is making a great contribution to the development of Asian art through a network of Asian artists formed beyond design.

I heard that the common theme of this year's ANBD regular exhibition is 'Journey'. Journey is not simply a process of travel, but it is a process of life, furthermore, it can be said that it is a flow of time that projects the past, present, and future of all phenomena and existence in the world. Through this journey, we strive to understand each other and make the world a better place. I think that Asian artists and designers creating works with these themes show the spirit of the times that project Asia's past, present, and future.

As an entrepreneur running various brands of the K-beauty that leads the world beauty industry, I would like to pay my respects to Professor Jeon, Jongchan of ANBD Korea for his devotion to ANBD's creative activities as a creative work organizer. At the same time, I look forward to contributing to the development of art and design in Asia through collaboration between Yakson and ANBD.

Once again, I congratulate on the 2022 ANBD Seoul Exhibition, and I wish ANBD's endless development.

Byung Chul, LEE

A handwritten signature in black ink, appearing to be 'Byung Chul, LEE' in a stylized, cursive script.

Chairman, Yakson Beauty



Congratulations to all the designers and artists on their participation in the 2022 ANBD Exhibitions which will be held successively in 2 exhibitions in Tainan, one each Seoul and Sapporo. However, due to the covid-19, it is highly likely that the exhibition will be held as non-face-to-face exhibitions this year as well. Seoul Exhibition will be at Dream Forest Gallery which is one of the most beautiful exhibition sites in northern part of Seoul.

In the last three years, we have been experiencing unprecedented changes in our lives due to the pandemic caused by Covid-19. This brought about tremendous changes in both mental and physical environment including social systems, as well as the behaviors and habits that we have been accustomed to. As a result, they had to develop and adapt to entirely new ways of living in order to survive. In a way, adapting to these changes is also the reason that mankind has been able to survive. Just as there is an oriental idea that change is a normal state, the world is always developing through change. This process of change is a journey, and we can see that we are making history while always adapting to this journey. In this context, 'Journey', the exhibition theme of this year can be said to be a mirror that reflects the real world we are in. Through the diverse journeys of artists and designers in Asia, we expect that we will share what kind of problems we have and what concerns we are facing and suggest directions for solving them together.

I would like to express my gratitude to all the ANBD members for their great efforts to hold the exhibition successfully despite the difficult pandemic situation caused by COVID-19. I am looking forward to being able to meet the ANBD members face to face as soon as possible.

Jongchan JEON, Ph.D. Des.

A handwritten signature in black ink that reads "Jongchan JEON". The signature is stylized and written in a cursive-like font.

Representative of ANBD Seoul
Professor, Hansung University

**ANBD, Seoul
Participants**

An, Kanghyun	Goto, Masanobu	Khiaomang, Kriangsak
Anantasanta, Rongkakom	Ha, Jiyon	Kim, Cheehoon*
Bae, JinSeok	Ha, Seungyong**	Kim, DongPyo
Bai, Song	Ha, Sooknyung*	Kim, Heegyun*
Bang, Kyunghan*	Han, Ahyoung*	Kim, Hyeonjeong
Boonyadacho, Naddawadee	Han, Heejung	Kim, Hyowon
Cha, Sujoung	Han, Insuk	Kim, Hyunjung
Chae, Heeju	Han, Ming	Kim, Jaehong
Chae, Jungeun	Han, Sangman	Kim, Jeehyun
Chaiyapoo, Chanathinat	Han, Sunmi	Kim, Jimin
Chamyen, Nuttakom	Hayashi, Mitsuo	Kim, KiYoung
Chang, Fei-Man	Heo, Jeongmin	Kim, Mikyung
Changpum, Chutima	Honda, Reia	Kim, Soyoung
Cheang, Karen PohKim	Hong, Yeobjung	Kim, SunHwa
Chen, Ching-Yi	Hsieh, Wei-Her	Kim, Sunmee
Chen, Guang-Dah	Hsu, MeiYueh	Kim, Sunyong
Chen, HanLing	Huang, ChienFang	Kobayashi, Rena
Chen, HsiangLing	Huang, Shu-Ya	Koo, Sumin
Chen, Po-Nien	Huang, Wen Tsong	Kumsook, Koraklod
Cheng, Chien-Hua	Huang, Yu-Sheng	Kunphunsup, Papattaranan
Chin, KonYit	Hur, Joonyoung	Kuo, Yu-Ling
Cho, Baemoon	Im, Minjung	Kwon, Sungha
Cho, Youl	Inkuer, Akapong	Lai, Hui-Ju
Cho, Youngye*	Ishii, Toshiwo	Lee, Changmin
Choi, Hyejin	Jeon, Jongchan	Lee, Heangwoo*
Choi, Jinhee	Jeon, Seunghyok	Lee, Jieun
Choi, Minjun*	Jeong, Jihong	Lee, Junga*
Choi, Taeseon	Jeong, Yoojung	Lee, Jungin*
Chok, Andy / Wong, Maxine	Jeong, Yoona	Lee, Kyunglim
Choo, ChoiSan	Jue, Wu-Haw	Lee, Minsun*
Choo, Kyungim*	Juksukha, Supawadee	Lee, Sangeun*
Chun, Jaehyun*	Kalip, Panuwad	Lee, Sejeoung*
Chung, Byunghun	Kang, Hyundae*	Lee, Somin
Chung, Jaewoo	Kang, Sunghae*	Lee, Wan
Chung, Min	Kasai, Noriyuki	Lee, Wonbeom
Chung, SuiLan	Katayanagi, Aoi	Lee, Yongphil
Daisaku, Ayaka	Kawabata, Miyu	Lee, Youngu
Fan, Hsiwen	Kawakami, Reo	Lee, Youngmi
Goh, ChengOon	Khek, ShinNam	Lee, Youngsook

Liew, TingChuang / Leow, ShyinMei
Likitmamon, Wannuchad
Lim, Ahjae
Limthattanakun, Teerasak
Lin, ShunChing
Lu, Shih-Yun
Maneechotpeeti, Pornyos
Maruyama, Matsuhiko
Matano, Shota
Mayusoh, Chanoknart
Min, Kyungmin*
Moon, Jungmook*
Moon, Sunyoung
Musikapan, Ravitep
Nakajima, Chie
Nebu, Yusuke
Nguitragool, Monthian
Oh, Cheolhoon
Oh, Eunkyung
Oh, Youngjae
Oshima, Naoki
OuYong, Yvonne YuetFoong
Padungsestakit, Wanasak
Park, Jaehong
Park, Jinwon*
Park, Keunsoo
Park, Moonhee*
Park, Sohyoung
Phrammanachot, Montita
Phriwanrat, Khanin
Phueaknamphol, Kanlayanee
Phungkate, Phuwarichsitta
Pimsam, Pukkapom
Pinnukul, Patamas
Po-dhivejakul, Pannatat
Poolkerd, Pichanun
Pommuttawarong, Tuenta
Praphruetdee, Orawan
Ra, Jeeyoung*

Rajapakse, Janaka
Ramrit, Sineenart
Rangsitsawat, Fonthip W.
Sadsunk, Suwit
Saito, Naomasa
Saitum, Waiyawat
Sakai, Maki
Sakda, Pompimon
Samleethong, Siratcha
Sangiam, Panuwat
Sangwalpetch, Noppadon
Sanjeeewa, Sagara
Sano, Tohru
Sasaki, Mizuki
Seo, Dongjin
Seo, Miyoung
Seol, Jihyoung*
Serizawa, Misaki
Sharifah, Mazwari
Shen, WeiCheng
Shim, Bokseob
Shin, Janghee
Shin, Seunghee
Shin, Yoonjhin*
Shinohara, Toshiro
Siow, YinYoong
Sirikhvunchai, Natcha
Son, Heejoo
Song, Gyaeyoung
Song, Jungyu*
Somsakda, Apiwat
Srisarankullawong, Nawapom
Suh, Seungyeon*
Suntrayuth, Rasa
Suwan-on, Chaiwat
Tajima, Miyuki
Tak, YoungHwan
Takahashi, Nobumasa
Takashima, Moyu

Takeuchi, Hina
Tan, Eleen
Tang, JungHsiao
Tanyapirom, Sakesan
Tawalwongsri, Sun
Tchah, Eunsoo
Teh, ChunBoey
Teppharak, Kusuma
Thanavanichagul, Chumnong
Tsai, Cheng-I
Ueda, Kaho
Um, Sohee
Virunhaphol, Farida
Wang Cheng, KanJung
Wang, MingFeng
Wang, ShengWen
Wanichakom, Aran
Woo, Hyunri
Wu, TingHuan
Yang, Chao-Fu
Yang, Leen*
Yap, AiLing
Yazaki, Keitarao
Yeom, Hyesoo*
Yi, Wonje*
Yoo, Boomee
Yoo, Dongkwan*
Yoo, Hyunah*
Yoon, Yeojong
Yosida, Haruki
Yun, Sumi
Zhang, Puhua

*This research was supported by a 2022 Research Grant from Sangmyung University.

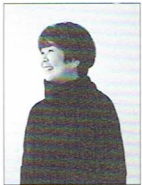
**This work was supported by the Paichai University Research Grant in 2022.



Sornsakda, Apiwat
 Phuket Rajabhat University
 Simple life journey#2
 apiwat.s@pkru.ac.th



Srisarankullawong, Nawaporn
 Suan Sunandha Rajabhat University
 Life and Survival 3
 Nawapom.sr@ssru.ac.th



Suh, Seungyeon
 Sangmyung University
 ICN-GMP, KE073, 2022-12-1
 ssy2003@hanmail.net



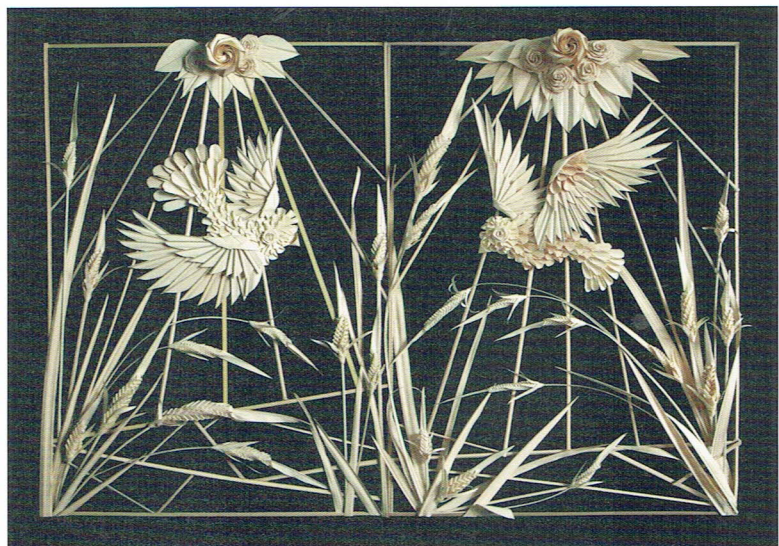
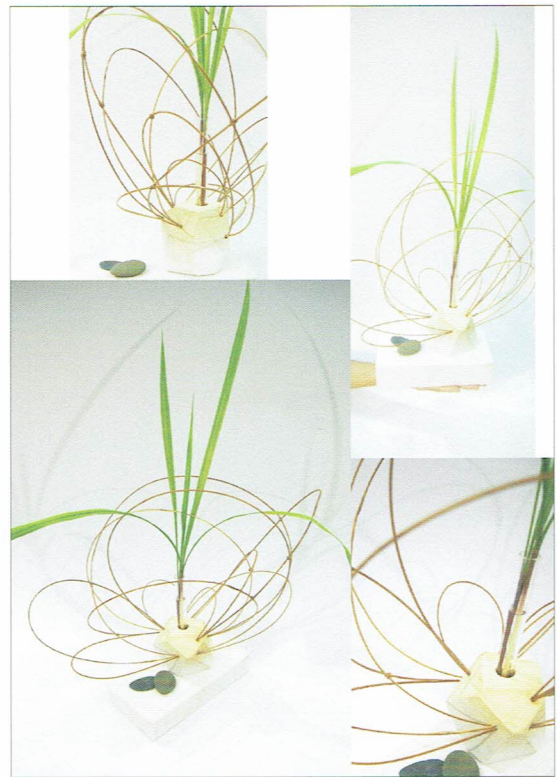
Suntrayuth, Rasa
 Burapha University
 Mr. Tofu
 rsuntrayuth@gmail.com

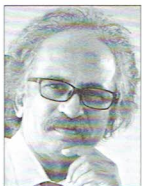


Suwan-on, Chaiwat
 Bansomdejchaopraya Rajabhat University
 The A-Chair of Hope
 design_pu@yahoo.com



Tajima, Miyuki
 Yachiyo Municipal Owada Junior High school
 Space Journey
 miyuki.anbd.23@gmail.com





Athula, Mahawalage

I'm glad to be a jury member for the ANBD-2022 Excellent Awards this year. I was so happy to see that Asian creators used "Journey" as the theme to do many creative works. The artists of the selected creations put great effort into creating various techniques for different styles. The minimal colored drawings and the slow-paced experimental dynamic contents soothe us in the sense of journey. Finally, I would like to congratulate all award-winning creators.

CEO, AM Kreations (Pvt) Ltd., Sri Lanka
mahawalage.amk@gmail.com



Chae, Jung Eun

저는 '다른 차원으로의 여정'이라는 주제에 부합하는지, 주제표현에 있어 창의적인지를 심사에 반영하였습니다.
또한 작가의 가치관과 예술성이 함께 녹아있는지도 중요하게 보았습니다.

Lecturer / College of Design / Hansung University
bluemoon617@naver.com



Chiu, NaiI

旅程，是從「起心動念」就開始。有旅行的準備、中途和未來。每一個階段都帶來各種躍動。在作品的審查時，無論具象或抽象，我都希望挑選具有讓人看了思考，且心情愉悅的作品。希望大家的作品能為世界帶來美好。

Associate Professor, Tainan University of Technolog
naii.chiu@gmail.com



Chung, SuiLan

經歷COVID-19的震撼之後，疫情的轉變猶如旅程中看似路的盡頭，其實是另一段未出現在地圖上的道路的開端。創作的過程何嘗不是窮盡一切後的淬鍊，尋求新的思想維度和生活態度。此次參展的作品正彰顯ANBD是個與時俱進的發表平台，創作者提出各自的見解，引領我們看到曙光即在不遠處。

Associate Professor, Tainan University of Technolog
t40054@mail.tut.edu.tw



Ko, Kai-Jen

- 1.明確的概念，揭示問題的事實對於帶來的轉變，具有洞察、反思、主張或可能的想法。
- 2.元素和語彙，利於溝通和被認知；能在賞析或展演時超越語言隔閡的創新或能被認同。
- 3.作品無論具象或抽象、單件或系列；能發揮材料特性，調和統一的追求，很令人期待。
- 4.能產生共鳴或價值；在參賽作品中能凸顯；展現面對問題，獨特的風格以及設計品味。

Professor, National Taichung University of Education
u0928258689@gmail.com



Koga, Kazuhiro

審査の基準として以下のような観点で選抜した。

- ・ 4点のクオリティに著しい差がないこと。
- ・ 安易にコピーして複数に増やしたものではないこと。
- ・ 造形デザイン的な要素 (Color/Form/Shape/Texture/Composition) に惹かれるものがあり稚拙でないもの。
- ・ 「旅」のテーマを直接的に表してなくても、旅に通じるような視覚的/心理的に非日常や開放感を感じるもの。

Professor, Nakamura Gakuen University Junior College
kakoga@nakamura-u.ac.jp



Liaw, Arthur IkHan

The wide variety of artworks on display in this showcase provided a rich and varied interpretation of the exhibition theme, "Journey." Through carefully considered subject matter, imaginative expression, and astute use of medium and techniques, they enlighten and reflect the concepts of change, transition, and continuity. While some works directly describe the subject, others elicit questions and criticism.

Assistant Professor, Fisrt City University College
arthur.liaw@firstcity.edu.my



Seo, Miyoung

The judge selected excellent works by prioritizing the theme exhibition, "Journey", during the Pandemic, and connecting with the artwork, which has an ideal composition and overall harmony. In addition, the judges evaluated the artist's aesthetics and creativity based on the color, form, and subject consciousness expressed in the work.

Full time Lecturer, Burapha University
smy750@gmail.com



Umeda, Motohiro

諸行無常とは、存在しているものは常に変化していることを意味しています。また「旅」とは、新しく訪れた土地の光を心の眼で感受することでもあります。そして、アートは日常とは異なる価値観を得るための手段の一つであり、その出会いは人や社会への関心をより豊かにしていきます。

Professor, Kumamoto University
umeda@educ.kumamoto-u.ac.jp



Wattana, Jutaviphat

The judge selected outstanding artworks in each region and nominated a total of 15, except for the evaluator's participating countries. Herewith, the judge states the evaluation criteria for the ANBD 2022 4 Periodic Exhibition as follows.

Selected the artwork which is applied with innovative creativity, stories, culture, and creative techniques. There is an appropriate composition that can reflect emotions and interact with the audience.

Professor Emeritus, Former professor Chulalongkorn University
chuwattana09@gmail.com



Yoon, Yeo Jong

'인생은 여정이다'라는 말처럼 우리는 삶 속에서 수많은 인연을 맺고, 새로움을 찾으며 배워갑니다. 2022 ANBD 주제가 'Journey' 이듯 각국의 다양한 작품들을 보며 그들의 생각과 삶을 느껴봅니다. 이 또한 경계를 넘어 다양한 교류를 지향하는 ANBD 취지와도 잘 어울린다고 생각합니다.

오랜 COVID-19로 모두가 힘든 시기를 보내고 있지만, 겨울이 가면 봄이 오듯 하루빨리 예전처럼 만나서 즐거운 자리를 함께 나누길 기원합니다.

Professor / Sookmyung Women University
h7023@hanmail.net

ANBD 2022 :Theme

「Journey」

The covid-19 pandemic has brought us many changes in our daily behaviors and habits. It leads us to notice drastic changes in the social milieu, but changes do not necessarily happen only in pandemics. In the Orient, there has been an idea that change is the norm in life. The world is in constant flux, on a constant journey where we live a life. The past ANBD themes were key milestones for us. ANBD 2022 expects works that reflect the theme of journey, which would be a journey to another phase of life and society, inspired by the words like continuity and change in life and culture, sustainability of the social milieu, generation and transformation in a broad meaning, and so on.

ASIA NETWORK BEYOND DESIGN 2022, Seoul

December 1 - 7, 2022

DREAM GALLERY at DREAM FOREST ART CENTER




ASIA NETWORK BEYOND DESIGN
2022 ANBD
SEOUL

